



One Health Clinic

An Integrated Approach To Treating The
Human Animal Unit

neighborcare  health.



College of
Veterinary Medicine



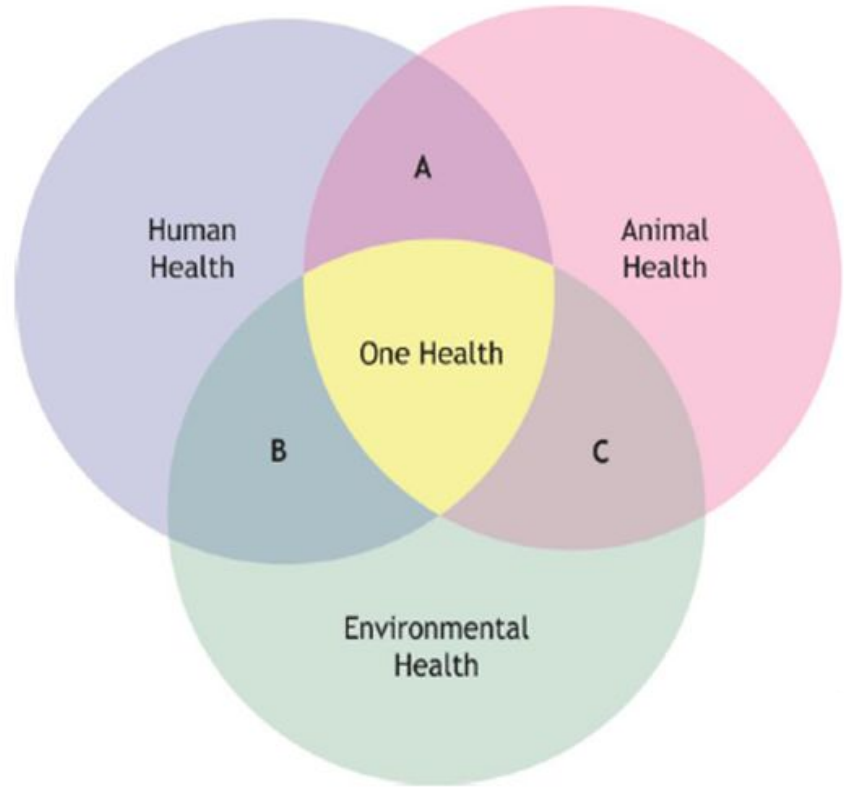
ENVIRONMENTAL
& OCCUPATIONAL
HEALTH SCIENCES

Katie Kuehl, DVM (she/her)
Vickie Ramirez (she/her)
Anina Terry, DNP, ARNP, FNP-C (she/her)

2022 National Healthcare
for the Homeless Conference

What is One Health?

Human Health
Animal Health
Environmental Health



*A “One Health”
Approach to Caring for
Persons Experiencing
Homelessness with
their Animals*



Gemina Garland-Lewis

<http://everythingtome.org/diamond-and-blue>

Current Clinical Care Models

- Traditional single-care model
 - Pros: focused, ability to see more patients
 - Cons: may not consider effect of human-animal interactions
- Referral care model
 - Pros: clients supported in knowledge & scheduling
 - Cons: barriers to follow through
- Side-by-side care model
 - Pros: services are available in the same location
 - Cons: services are still siloed
- **One Health Clinical Care Model**
 - Pros: services are integrated; combined healthcare plans
 - Cons: not a numbers generator!

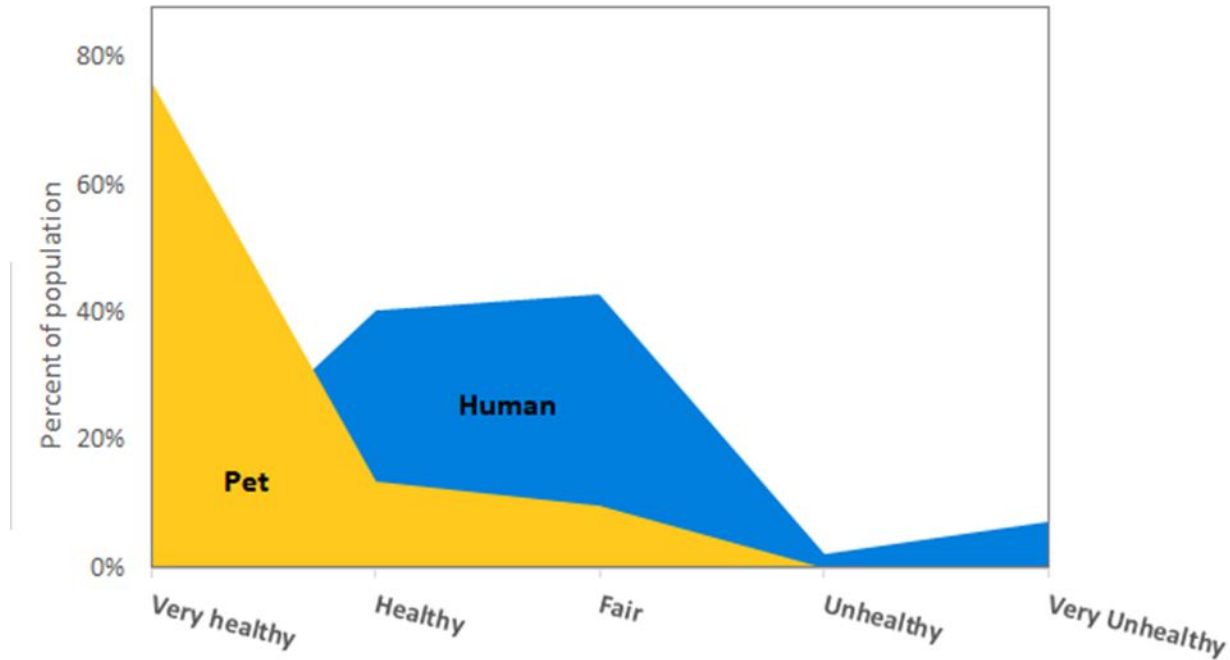
- Traditional Care Model/Single Care Model
- Referral Care Model
- Side-by-Side Care Model/Parallel Care Model
- **One Health Clinical Care Model**



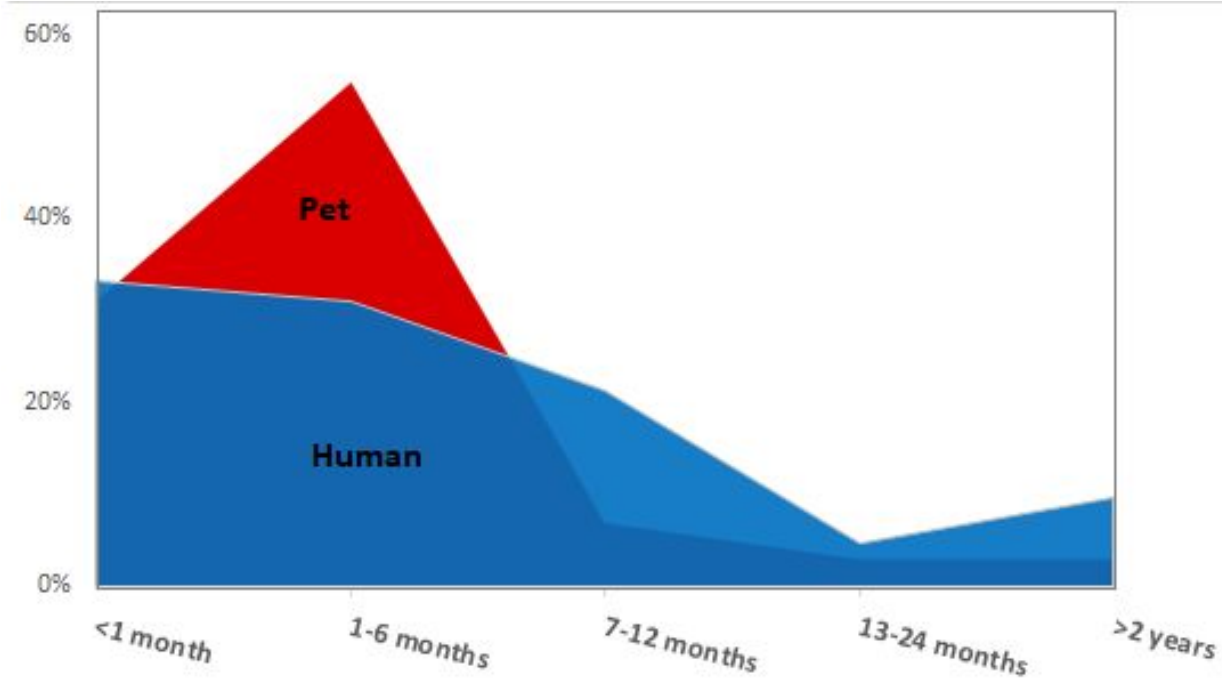
Photo: Amanda Richer

“I have to have her, and I think every homeless person, I think every drug addict, I think anybody that is going through something, where they think that they are at the bottom, that they don't have anything left, they need to put something first. And there's times when I was trying to quit meth, over the last two years, where I got out of bed because I knew she needed to use the bathroom. I didn't kill myself cuz I knew that she needed me...if you put something before yourself, often times that one decision keeps you from doing the bad thing. What does the dog need today? If the dog's okay, I'll be okay.”

Stated health of self and animal



Stated last date of healthcare visit



The Human-Animal Bond

POSITIVE IMPACTS: **NEGATIVE IMPACTS:**

- Support
 - Emotional
 - Physical
 - Health Benefits
 - Protection
 - Companionship
- Barriers
 - Indoor spaces
 - Housing
 - Healthcare
 - Zoonotic disease
 - Prioritize needs of animal over self
 - Cost of pet care, supplies, food, etc.
 - Impact of negative animal behaviors

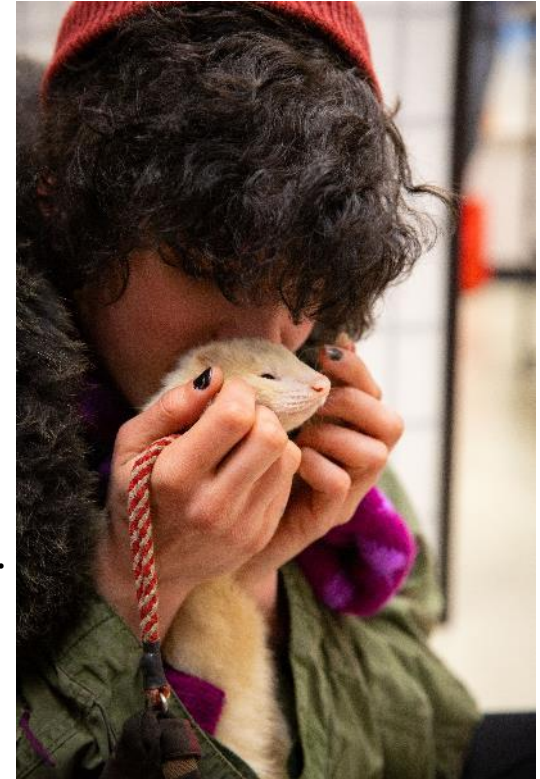


Photo: Gemina Garland-Lewis



\$2 CASH or VENMO

REAL CHANGE

MARCH 11 - 17, 2020 ■ VOLUME 27 NUMBER 11 ■ REALCHANGENEWS.ORG

YOUR VENDOR BUYS THIS PAPER FOR 60¢ AND KEEPS ALL THE PROCEEDS. PLEASE PURCHASE FROM VENDORS WITH LAVENDER 2020 BADGES.

Hunkering down in a viral epicenter, p.3

HEAL!
The One Health Clinic treats homeless youth and their pets, p.5



When illness separates us
What happens to your pets if you're homeless and need hospital care? p.4



Book review: The dog doctrine
In 'Dogs,' a French philosopher sniffs out our connection to the canine world. p.8

Veterinary Care

- Wellness care
- Chronic conditions
- Behavioral evaluation
- Vaccinations
- Supplements
- Nutrition
- Pet Supplies
- Screening for shared risks



Human Health Care

- Treatment for illnesses or injuries
- Vaccinations and labs
- Referral to specialists
- Help with substance use
- Mental health concerns
- Sexual & reproductive health care
- Gender-affirming care
- Connection to community resources
- and more!



The “Just Say ‘Hello’” Policy

“I don’t need to see a doctor, I am just here for my dog’s vaccinations”



Leveraging Integrated Human-Veterinary Care

- Veterinarians are a trusted profession
- Veterinarians may be more aware of environmental health hazards and shared risks and treating the pair jointly can highlight those shared environmental exposures
- Value of having the human healthcare onsite to easily connect pet owners with human healthcare services
- Non-traditional access point for human healthcare

Teaching Clinic



Lessons learned from the One Health Clinic

- **Having free veterinary health care gets people in the door - and having other services integrated into the system increases participation in all services**

Lessons learned from the One Health Clinic

- Having free veterinary health care gets people in the door - and having other services integrated into the system increases participation in all services
- **Treating the human-animal as the unit they are improves the health care of both**

Lessons learned from the One Health Clinic

- Having free veterinary health care gets people in the door - and having other services integrated into the system increases participation in all services
- Treating the human-animal as the unit they are improves the health care of both
- **Training students in all the human and animal health sciences to work both together and with this community creates better providers with both increased empathy and skills.**

Lessons learned from the One Health Clinic

- Having free veterinary health care gets people in the door - and having other services integrated into the system increases participation in all services
- Treating the human-animal as the unit they are improves the health care of both
- Training students in all the human and animal health sciences to work both together and with this community creates better providers with both increased empathy and skills.
- **The data are showing quantifiable benefits to this model of care**

Case Study



Photo by Gemina Garland-Lewis

Case Study - Small Group Questions

- 1) *Quick introductions and decide on a note taker and reporter for your group*
- 2) *Review the case with your team.*
- 3) *Make a list of any additional questions you have or information you would need to support this client in a One Health way*
- 4) *Discuss what other services might be needed?*
- 5) *List tasks each provider from the services above (question 4) can do to help this patient.*
- 6) *Discuss supportive ways to interact with this patient*

Case Study Summary

Human Health Information

- *Patient is pregnant in their first trimester*
- *Marijuana use*

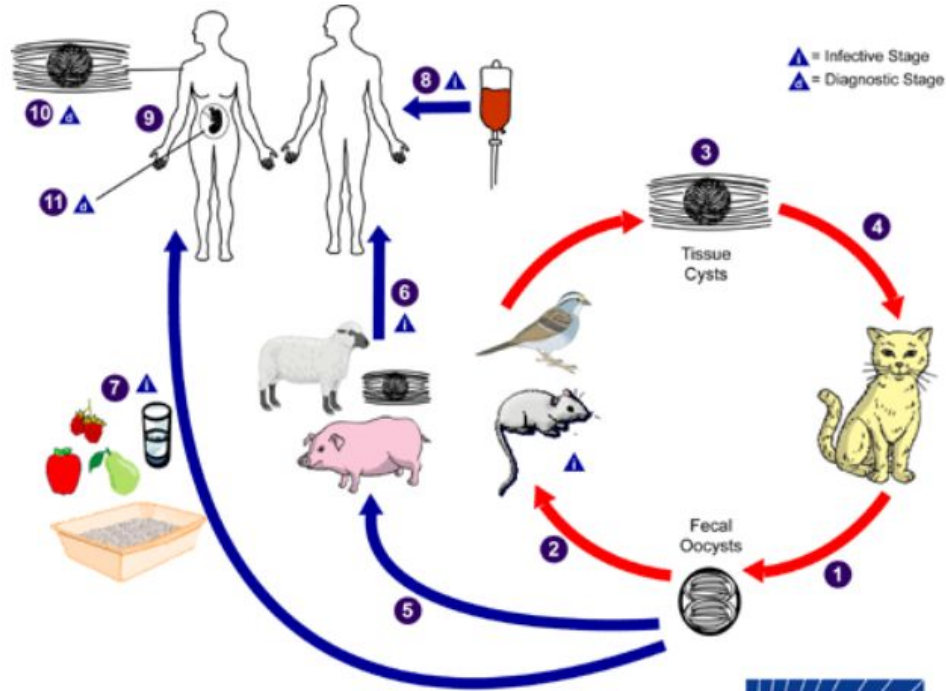
Veterinary Care Information

- *Cat is found to have fleas*
- *Cats are reported to be catching rats/mice in the home*

Case Manager/Environmental Health

- *Reports of rodent feces, hoarding tendencies, unclean litter boxes*
- *Homelessness status: at risk for homelessness*

Toxoplasmosis



The One Health Clinic Toolkit
www.onehealthclinic.org



How to use this toolkit

There is a lot of information that is shared on this website. There are a couple of ways you can utilize the information shared:

- **Comprehensive toolkit:** this version includes all the recommendations we created for starting and operating a clinic starting from inception.
- **Toolkit sections:** In this format, you can find the sections that are most relevant to you for reference.
- **Forms:** download forms we created as resources that you can use to get started.
- **Resources:** links to several other sites that will be important tools to create your clinic and provide educational materials your team needs for success.
- **“Questions to consider”:** Each section ends with “Questions to Consider” in order to get a quick summary of the information described above.

How Can You Build a One Health Clinic in your Community?

- Sign up for the free toolkit at www.onehealthclinic.org
- Contact us at onehealthclinicseattle@gmail.com

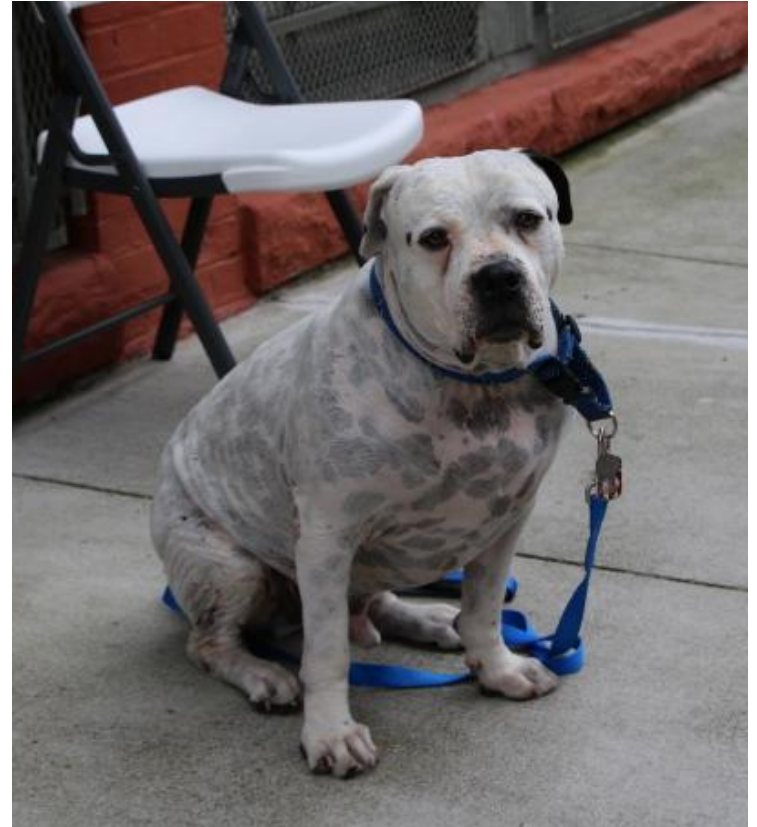


Photo: Amanda Richer

Next Steps



- How could your profession add to the clinic model?
- How to approach barriers?
- What else should we be considering?



Thank You!

onehealthclinicseattle@gmail.com

www.onehealthclinic.org

facebook @onehealthclinic