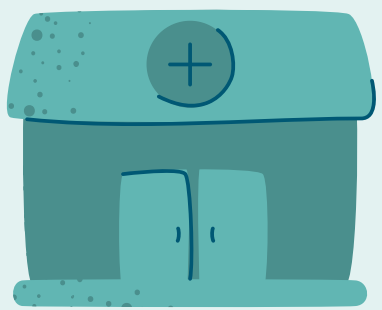


Flu Vaccine Guidance

during COVID-19 for providers serving people without homes

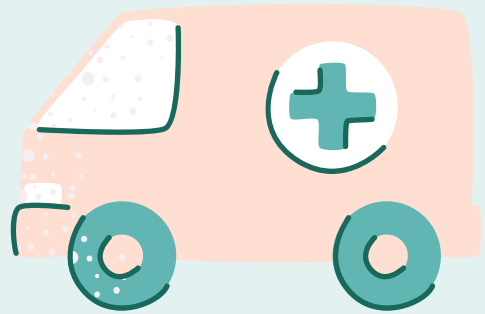
People experiencing homelessness are uniquely vulnerable to COVID-19 and the Flu and may face additional barriers to receiving vaccinations. A flu vaccine this season can also help reduce the burden on our healthcare systems responding to the COVID-19 pandemic.

Provide Vaccinations Across the Housing Continuum



Health Centers

Shelters



Public Housing

Encampments

Hotels/Motels

Integrate Best Practices

Co-locate COVID-19
Testing and Flu
Vaccinations

Everyone 6 months of
age and older should
get a flu vaccine every
season with rare
exception



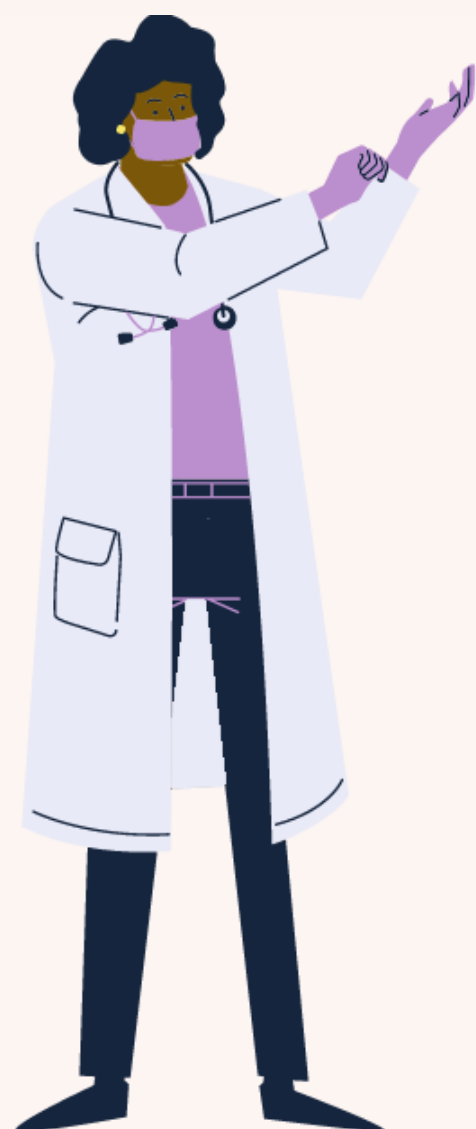
Vaccination in the medical home
ensures that patients receive other
preventive services that may have been
deferred during the COVID-19
pandemic

Maintain COVID-19 Precautions

Personal Protective
Equipment (PPE)
including eye
protection

Physical distancing at
least six feet apart

Face masks for staff and
consumers



Additional Resources

Guidance for Planning Vaccination Clinics Held
at Satellite, Temporary, or Off-Site Locations:
<https://www.cdc.gov/vaccines/hcp/admin/mass-clinic-activities/index.html>

Free print materials
<https://www.cdc.gov/flu/resource-center/freeresources/print/index.htm>